



Mina
light-shaft covers

**DRAINAGE AND
DEWATERING SYSTEMS**

**HEAVY-DUTY
SYSTEMS**

ROOF AND WALL
SYSTEMS

PLANTING
SYSTEMS

BATHROOM AND
KITCHEN SYSTEMS



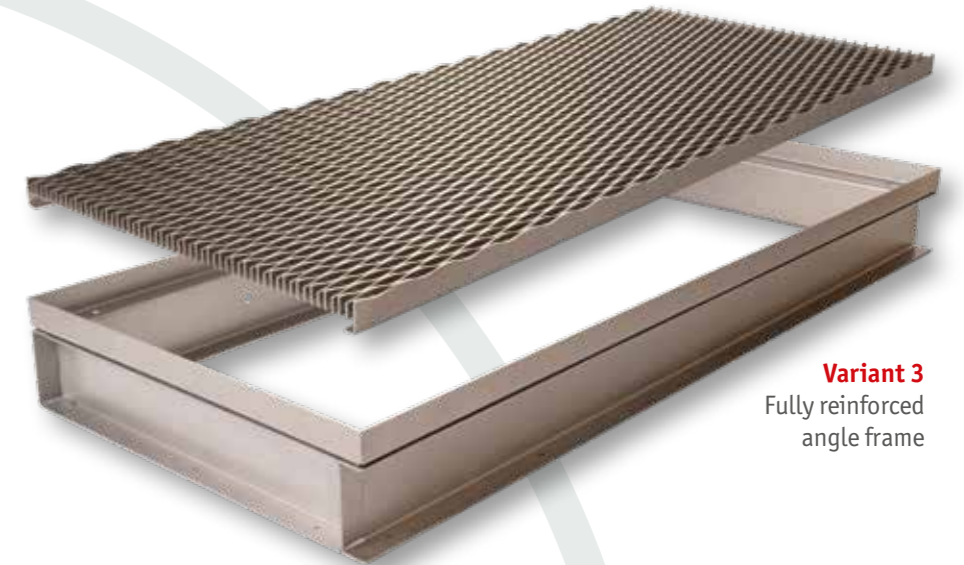
Mina light-shaft covers

Our **Mina** light-shaft covers lend the perfect finish to cellar shafts – with a precise fit and plenty of aesthetic appeal. A precise fit because our covers are always made to measure in line with your individual specifications; aesthetic appeal because you can choose from our extensive range of gratings: from classic mesh right over to striking design solutions, there really is something for every style.

Variety of designs to meet your specifications and demands

Gratings and angle frames for any installation location

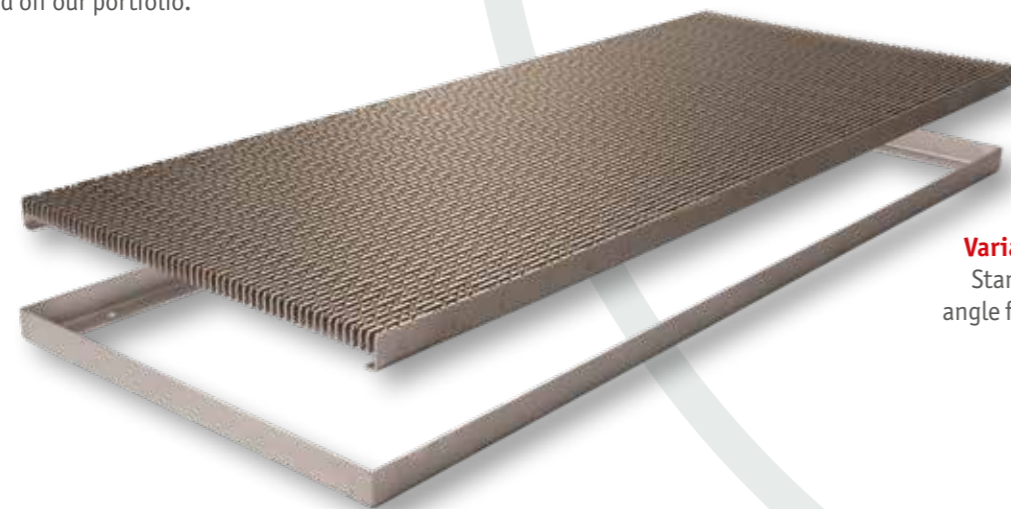
We offer a choice of apt cellar-shaft covers, either as a grating manufactured to fit an existing angle frame, or as a complete package that includes both the grating and the angle frame. We can also reinforce the frames on the wall side or in their entirety during manufacture. Frames are fixed in place by either screwing them down or setting them in concrete.



Variant 3
Fully reinforced
angle frame



Variant 2
Angle frame
reinforced on
the wall side



Variant 1
Standard
angle frame

**Always
made to
measure**

Dimensions

Individual custom manufacture on request

Material and thickness

Grating: stainless steel or hot-dip galvanised steel
Frame: stainless steel 3.0mm to 6.0mm,
depending on load

Accessories

Safety chains

Materials used

We manufacture our products using exclusively European materials from Germany, Sweden, France and Italy.



Your light shafts need to withstand vehicle traffic?

No problem. Depending on their intended use, we produce our covers with the respective load in mind, whether for foot traffic, or car or truck loads. Optional extras, such as the inclusion of safety chains with all grating designs, round off our portfolio.



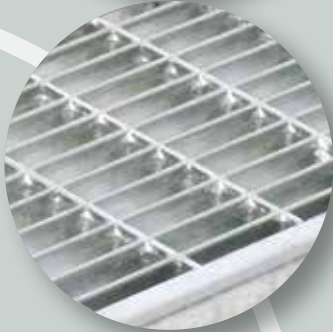
Range of gratings – the perfect finish

Gratings for our *Mina* light-shaft covers

We currently offer a selection of nine different gratings made from hot-dip galvanised steel or stainless steel in seven distinct designs, which are always made to measure and designed for various load classes.



Mesh grating 30x10
stainless steel



Mesh grating 30x10
hot-dip galvanised steel



Longitudinal bar grating 20x3
stainless steel



Longitudinal bar grating 20x3
hot-dip galvanised steel



Longitudinal bar grating 7x7
stainless steel



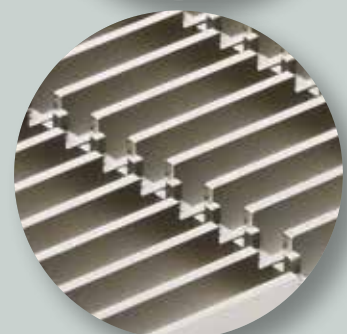
Hydra Linearis
stainless steel



Legato
stainless steel



Ritmo
stainless steel



Staccato
stainless steel





Our aspiration: to simply be better.

More than *45 years* of metalware production

Richard Brink is a medium-sized and growing family-run company from Schloss Holte-Stukenbrock. Founded in 1976, the company is now managed by the second generation. With over 150 employees and our own, also internationally oriented sales team based, for instance, in Austria, France and the Netherlands, we have established ourselves in the market as a specialist for premium metal goods.

We develop, produce and sell innovative drainage and dewatering solutions alongside versatile planting systems and products for roofs and walls, industry, bathrooms and kitchens.

In doing so, we place great importance on a level of workmanship and dimensional accuracy that satisfies our customers' own high standards. Not only are we known for our broad range of standard products, we have also made a name for ourselves as a manufacturer of individual, custom-made products and bespoke solutions.



Mina light-shaft covers



Richard Brink GmbH & Co. KG
Metalware Production and Sales

Germany

Görlitzer Straße 1
33758 Schloß Holte-Stukenbrock
T +49 (0)5207 95 04-0
F +49 (0)5207 95 04-20

anfragen@richard-brink.de
bestellungen@richard-brink.de

Austria

Rosenheim 112 b
9805 Baldramsdorf
T +43 (0)4762 75 00-0
F +43 (0)4762 75 00-04

anfragen@richard-brink.at
bestellungen@richard-brink.at

Switzerland

Badenerstrasse 549
8048 Zürich
T +41 (0)43 210 96 14

anfragen@richard-brink.ch
bestellungen@richard-brink.ch

www.richard-brink.com
with supplier database

**DRAINAGE AND
DEWATERING SYSTEMS**

**HEAVY-DUTY
SYSTEMS**

**ROOF AND WALL
SYSTEMS**

**PLANTING
SYSTEMS**

**BATHROOM AND
KITCHEN SYSTEMS**