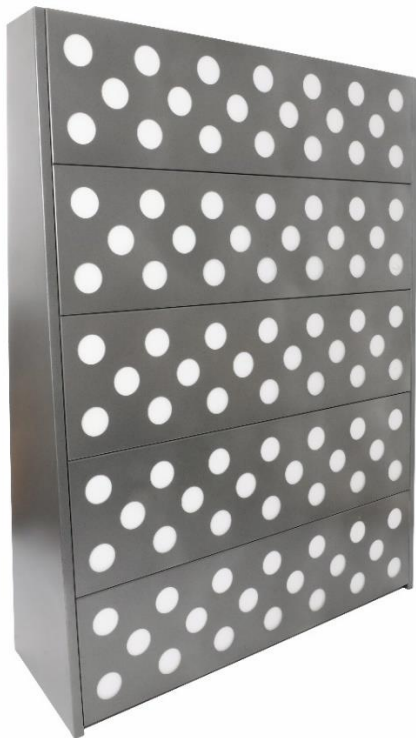




Technical Datasheet

Plant Wall Eva



Manufacturer

Richard Brink GmbH & Co KG
Metal goods manufacture and distribution
Görlitzer Str. 1
33758 Schloß Holte-Stukenbrock
Phone: 0049 (0)5207 9504-0
Fax: 0049 (0)5207 9504-20



Product description

The product Eva is a planting wall that allows the creation of additional vegetation in the smallest possible space thanks to its green side walls. In addition to the greenery and the resulting improved indoor climate, the plant wall also acts as noise and privacy protection.

Dimensions

The plant wall is supplied in two different heights.

Height	Width	Depth bottom	Depth top
1,176 mm	1,450 mm	500 mm	324 mm
1,944 mm	1,450 mm	500 mm	209 mm

As standard, the plant wall is available in natural finishes (*without surface treatment*) or with powder coatings in the colors pure white (*RAL 9010*) or micaceous iron ore (*DB 703*). Other colors are available on request.

All dimensions can be modified and supplied as custom-made products at the customer's request.

There is space for 20 plants per panel; the lower version has space for 120 plants, the higher version has space for 200 plants per wall.

Materials used

We only use European material from Germany, Sweden, France and Italy for our products.

Material specification planting wall

Hot-dip galvanized steel with magnesium-zinc coating.

Material thickness: 2.0 mm



Processing and care instructions

There are various construction options. The planting wall can either be filled with a mineral bulk material mixture with a small proportion of organic substance (*spec. dry weight should be at least 1,036 kg/m³*) or with soil or substrate of your choice.

Our installation instructions apply.

The plant wall must not be cleaned with strong acids or alkalis, but by hand with a broom or, if necessary, with a high-pressure cleaner.

Further installation and utilisation instructions as well as information on the material can be found at:

<https://www.richard-brink.de/en/downloads/overview.html>