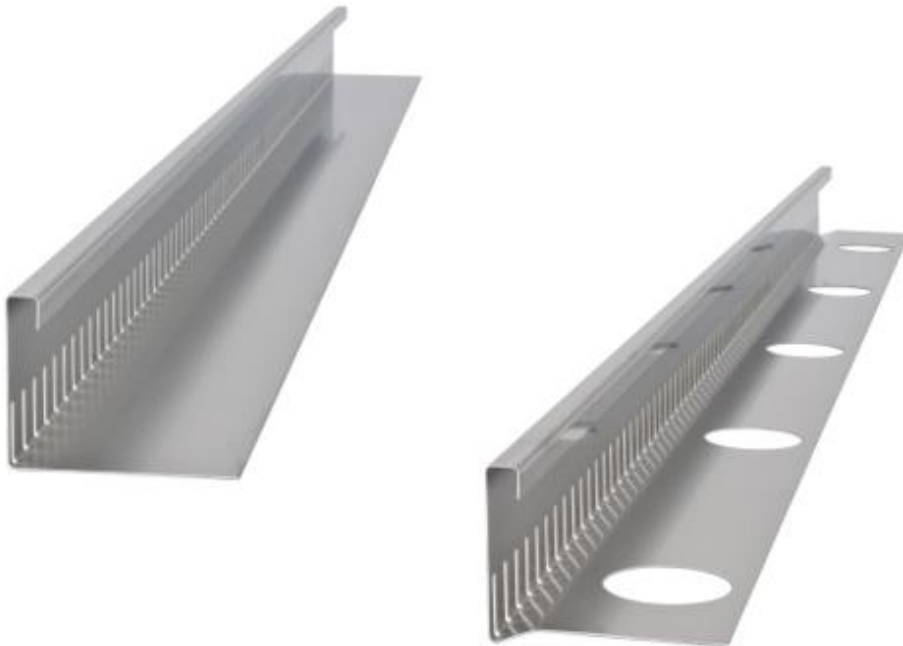




## Technical Datasheet

### Gravel Stop Silex (fixed)



### Manufacturer

Richard Brink GmbH & Co KG  
Metal goods manufacture and distribution  
Görlitzer Str. 1  
33758 Schloß Holte-Stukenbrock  
Phone: 0049 (0)5207 9504-0  
Fax: 0049 (0)5207 9504-20



## Product description

The article KFL (*gravel stop*) is an edging with integrated slotted holes (30x5 mm), which is manufactured in standard dimensions and also customised according to customer requirements. All leg lengths and angles can be freely selected. In general, a sectional drawing (sketch) must always be submitted to clarify feasibility.

The inlet cross-section is 72.32 cm<sup>2</sup>/m (*slotted hole 30x5 mm / punching every 20 mm*).

Larger inlet cross-sections by arrangement.

The gravel stop strip is manufactured in two versions:

- without drip edge
- with drip edge

For both variants, round punched-out holes ( $\varnothing$  60 mm, *distance between punched-out holes approx. 450 mm*) are possible in the bearing surfaces for welding with bitumen sheets.

## Standard dimensions

The upper back edge is 2 x 15 mm (*vertical and horizontal leg*).

The width of the support legs is variable.

Height:            Support leg:

60 mm            100 mm

80 mm            105 mm

100 mm           120 mm

The standard length is 3,000 mm.

## Material specifications

Material: Aluminium with recycled content of at least 55 % (AlMg3), stainless steel V2A (1.4301), copper

Other materials available on request.



## **Materials used**

We only use European material from Germany, Sweden, France and Italy for our products.

## **Material thickness**

Aluminium: 1.5 mm (*1.0 mm, 2.0 mm or 3.0 mm on request*)

Stainless steel: 1.0 mm (*1.5 mm, 2.0 mm, 3.0 mm on request*)

Copper: 1.0 mm

## **Accessories**

Connectors

## **Processing and care instructions**

If necessary, the gravel stop strips should be laid in accordance with the waterproofing manufacturer's instructions (e.g. bitumen manufacturer, film manufacturer, etc.); if necessary, precautionary measures such as building protection mats should be laid. The gravel stop strips can be cut to size, but care must be taken to ensure that the cutting medium (e.g. saw blade, cutting disc, etc.) is absolutely clean or does not contain any components of other metals, as otherwise corrosion may occur. For example, only new cutting discs should be used for stainless steel gravel stop strips.

Dust particles of other metals or general cutting of components with flying sparks on the product should generally be avoided. If dust particles or soiling from other metals are present, these must be removed immediately using appropriate cleaning agents.

When installing on sealing surfaces, appropriate protective measures must be taken in accordance with the regulations.

Our installation instructions apply.

Further installation and usage instructions as well as information on the material can be found at: <https://www.richard-brink.de/en/downloads/overview.html>